

PRODUCT
CATALOG
YEAR 2024



THE LOOP

DISCOVER OUR REFURBISHED SONY PRODUCTS, AN IDEAL CHOICE FOR RESELLERS SEEKING QUALITY AND PERFORMANCE AT THE BEST PRICE.

REFURBISHMENT PROCESS

Original Sony: Each article is an authentic Sony piece, guaranteeing the best gaming experience.

Official Parts: Refurbished with official parts, ensuring maximum reliability and durability.

QUALITY AND AUTHENTICITY

Meticulous Inspection: Every product is thoroughly inspected to detect and correct any defects.

Component Replacement: Worn or defective components are replaced with official Sony parts.

Functional Testing: Materials undergo rigorous tests to guarantee optimal performance.

STANDARDS & CERTIFICATIONS

European Compliance: Our products meet European control and quality standards, ensuring their safety and performance.

Rigorous Testing: Each of our asset undergoes an exhaustive testing process to ensure it functions like new.

*All articles are available with or without boxes. Articles sold with boxes are subject to 2\$ extra fees.

*All references are available in pallets with special prices, please contact us for more information on contact@theloopme.com or by what's app +971 58 528 9393



TABLE OF CONTENT

DS4 / DS5

PAGE 2-9

HEADSETS

PAGE 10-11

OTHER

PAGE 12-13

SPARE PARTS

PAGE 14-15

CONSOLS

PAGE 15

PHONES

PAGE 16-21

24/7 AFTER SALES-SERVICE





DUALSHOCK 4



Product #DS041

WHITE

Brand : SONY
Material : Plastic
16,2x5,2x9,8 cm (LxPxH), Weight : 210 g



Available Colors



Product #DS042

BLACK

Brand : SONY
Material : Plastic
16,2x5,2x9,8 cm (LxPxH), Weight : 210 g



Available Colors



Product #DS043

CAMO

Brand : SONY
Material : Plastic
16,2x5,2x9,8 cm (LxPxH), Weight : 210 g



Available Colors





DUALSHOCK 4



Product #DS044

BLUE

Brand : SONY
Material : Plastic
16,2x5,2x9,8 cm (LxPxH), Weight : 210 g



Available Colors



Product #DS045

MIDNIGHT BLUE

Brand : SONY
Material : Plastic
16,2x5,2x9,8 cm (LxPxH), Weight : 210 g



Available Colors



Product #DS046

MAGMA RED

Brand : SONY
Material : Plastic
16,2x5,2x9,8 cm (LxPxH), Weight : 210 g



Available Colors





DUALSHOCK 5



Product #DS051

WHITE

Brand : SONY
Material : Plastic
16x6.6x10.9 cm (LxHxL), Weight : 280 g

Available Colors



Product #DS052

MIDNIGHT BLACK

Brand : SONY
Material : Plastic
16x6.6x10.9 cm (LxHxL), Weight : 280 g

Available Colors



Product #DS053

COSMIC RED

Brand : SONY
Material : Plastic
16x6.6x10.9 cm (LxHxL), Weight : 280 g

Available Colors





DUALSHOCK 5



Product #DS054

COBALT BLUE

Brand : SONY
Material : Plastic
16x6.6x10.9 cm (LxHxL), Weight : 280 g

Available Colors 

Product #DS055

STARLIGHT BLUE

Brand : SONY
Material : Plastic
16x6.6x10.9 cm (LxHxL), Weight : 280 g

Available Colors 



Product #DS056

NOVA PINK

Brand : SONY
Material : Plastic
16x6.6x10.9 cm (LxHxL), Weight : 280 g

Available Colors 





SPECIAL EDITIONS



MILITARY CAMO

Brand : SONY
Material : Plastic
16x6.6x10.9 cm (LxHxL), Weight : 280 g

Product #DS057



GOD OF WAR

Brand : SONY
Material : Plastic
16x6.6x10.9 cm (LxHxL), Weight : 280 g

Product #DS058



SPIDERMAN

Brand : SONY
Material : Plastic
16x6.6x10.9 cm (LxHxL), Weight : 280 g

Product #DS059



STERLING SILVER

Brand : SONY
Material : Plastic
16x6.6x10.9 cm (LxHxL), Weight : 280 g

Product #DS0510



NEW ARRIVAL

The PS5 DualSense Edge controller is the premium version of the standard DualSense, designed for serious gamers. It offers advanced customizable features, such as interchangeable back buttons, replaceable analog sticks, and adjustable control profiles. Experience enhanced ergonomics and immersive gameplay with haptic feedback and adaptive triggers. Perfect for total control in every game.

DS5 EDGE





HEADSETS



Product #HD01

PULSE 3D

Brand : SONY
Material : Plastic
21,3x19x9,3 cm, Weight : 292 g

Available Colors



Product #HD02

PS4 PLATINUM

Brand : SONY
Material : Plastic
23,6x25.8x 12.6 cm, Weight : 400 g

No Available Colors



Product #HD03

PS4 HEADSET

Brand : SONY
Material : Plastic
23,6x25.8x 12.6 cm, Weight : 400 g

No Available Colors





NEW ARRIVAL

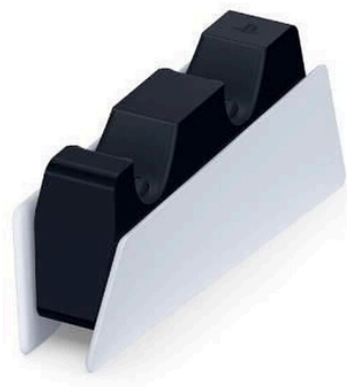
The PS5 Pulse Elite Wireless Headset delivers top-tier audio performance tailored for PlayStation 5. With immersive 3D audio, noise-canceling technology, and a sleek, comfortable design, it provides an unparalleled gaming experience. The headset features a retractable boom microphone for crystal-clear communication and offers long-lasting battery life for extended play sessions. Ideal for gamers seeking premium sound quality and comfort.

PULSE ELITE





SPECIAL EDITIONS



DOCKS PS5

Brand : SONY
Material : Plastic
12 x 9 x 19 cm, Weight: 500 g

Product #HD07



PS4 VR

Brand : SONY
Material : Plastic
18.7 x 27.7 x 18.5 cm, Weight: 250 g

Product #HD08



CAMERA V2 PS4

Brand : SONY
Material : Plastic
20 CM x 30 CM, Weight : 183 g

Product #HD09



CAMERA HD PS5

Brand : SONY
Material : Plastic
10x4,1x7,5 cm (LxHxP), Weight : 92 g

Product #HD010

NEW ARRIVAL

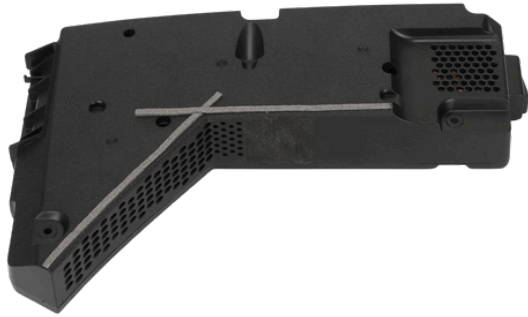
The PS VR2 for PS5 offers a cutting-edge virtual reality experience with ultra-high-definition visuals, precise eye tracking, and a wide field of view. Equipped with advanced haptic feedback and adaptive triggers, the VR headset brings an unparalleled sense of immersion. It features an ergonomic design for comfort during extended play sessions and a single-cable connection for easy setup. Perfect for gamers looking to dive deep into the world of virtual reality on PlayStation 5.

PS5 VR2





SPARE PARTS



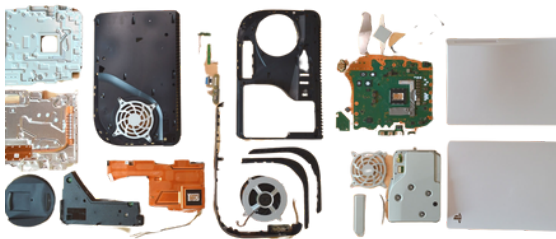
POWER BLOCK

Brand : SONY
Material :
Dimension : 20CM x 30 CM
Product: #SP01



COVERS

Brand : SONY
Material :
Dimension : 20CM x 30 CM
Product: #SP02



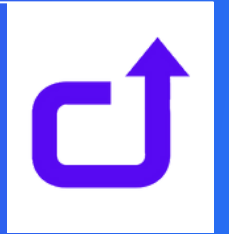
BLU-RAY

Brand : SONY
Material :
Dimension : 20CM x 30 CM
Product: #SP03



INTERNAL FAN 17 BLADES NIDEC PS5

Brand : SONY
Material :
Product: #SP04



EXCLUSIVITY

The LOOP will propose you in exclusivity different models of PS4 or PS5 when available in stock.

PS4 Slim / PS4 Pro / PS5 Standard Edition / PS5 Digital Edition





COMING SOON

The LOOP is very happy to soon propose you a large range of refurbished iphones from iphone 11 to iphone 15 and more brands such as ULEFONE ...

PHONES





IPHONES



Product #PH14

IPHONE 14 PROMAX

Brand : APPLE

Material :

Dimension : 20 CM x 30 CM

Available Colors



Product #PH142

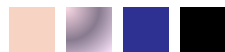
IPHONE 14 PRO

Brand : APPLE

Material :

Dimension : 20 CM x 30 CM

Available Colors



Product #PH143

IPHONE 14

Brand : APPLE

Material :

Dimension : 20 CM x 30 CM

Available Colors





IPHONES



Product #PH13

IPHONE 13 PROMAX

Brand : APPLE

Material :

Dimension : 20 CM x 30 CM

Available Colors



Product #PH132

IPHONE 13

Brand : APPLE

Material :

Dimension : 20 CM x 30 CM

Available Colors



Product #PH12

IPHONE 12 PROMAX

Brand : APPLE

Material :

Dimension : 20 CM x 30 CM

Available Colors





IPHONES



Product #PH122

IPHONE 12

Brand : APPLE

Material :

Dimension : 20 CM x 30 CM

Available Colors



Product #PH123

IPHONE 12 MINI

Brand : APPLE

Material :

Dimension : 20 CM x 30 CM

Available Colors



Product #PH11

IPHONE 11 PROMAX

Brand : APPLE

Material :

Dimension : 20 CM x 30 CM

Available Colors





IPHONES



Product #PH112

IPHONE 11 PRO

Brand : APPLE

Material :

Dimension : 20 CM x 30 CM

Available Colors



Product #PH113

IPHONE 11

Brand : APPLE

Material :

Dimension : 20 CM x 30 CM

Available Colors



Product #PHSE

IPHONE SE

Brand : APPLE

Material :

Dimension : 20 CM x 30 CM

Available Colors





IPHONES



Product #PHSE1

IPHONE SE V1

Brand : APPLE
Material :
Dimension : 20 CM x 30 CM

Available Colors

Product #PHSE2

IPHONE SE V2

Brand : APPLE
Material :
Dimension : 20 CM x 30 CM

Available Colors



Product #PHUL

ULEPHONE

Brand : SONY
Material :
Dimension : 20 CM x 30 CM

No Available Colors





CATALOG

YEAR 2024

CONTACT@THELOOPME.COM

WWW.THELOOPME.COM